

Parts catalog

Legend

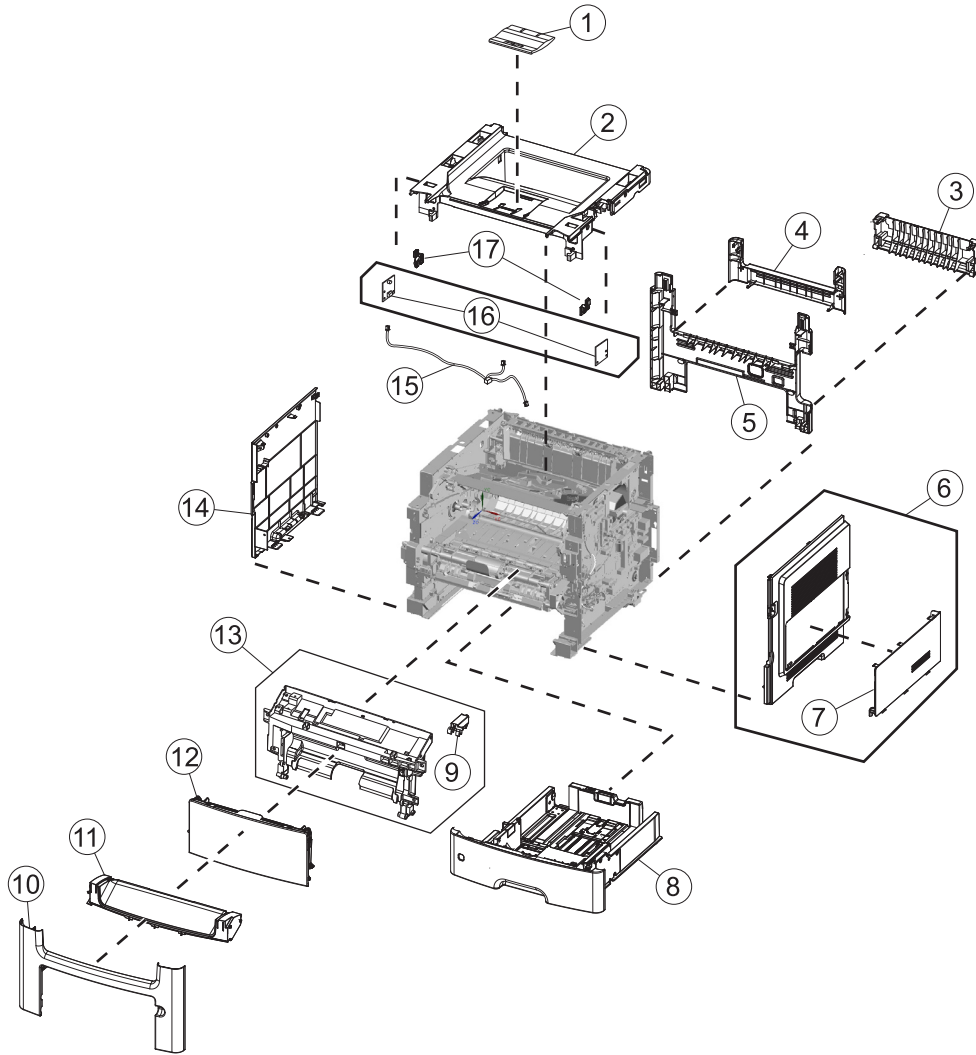
The following column headings are used in the parts catalog:

- **ASM-index**—Identifies the assembly and the item in the diagram. For example, 3-1 indicates Assembly 3 and item 1 in the table.
- **Part number**—Identifies the unique number that correlates with the part.
- **Units/mach**—Refers to the number of units actually used in the base machine or product.
- **Units/option**—Refers to the number of units in a particular option.
- **Units/FRU**—Refers to the number of units in a particular FRU.
- **Description**—A brief description of the part.

The following abbreviations are used in the parts catalog:

- **NS** (not shown) in the Asm-index column indicates that the part is procurable but is not pictured in the illustration.
- **PP** (parts packet) in the Description column indicates that the part is contained in a parts packet.

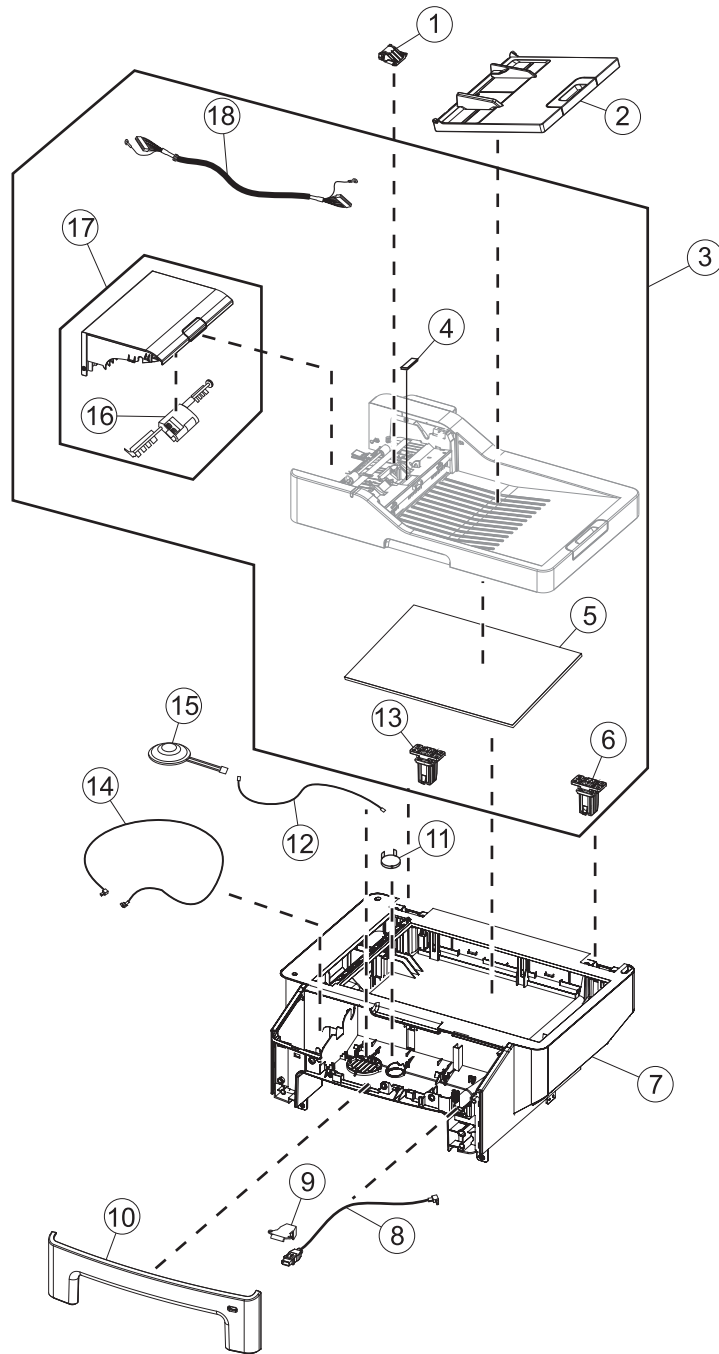
Assembly 1: Covers



Assembly 1: Covers

Asm-index	P/N	Units/mach	Units/FRU	Description	Removal procedure
1	40X9102	1	1	Output expander	N/A
2	40X9099	1	1	Top cover	"Top cover removal" on page 324
3	40X9096	1	1	Exit rear door	"Rear exit door removal" on page 317
4	40X9084	1	1	Diverter cover	"Diverter cover removal" on page 323
5	40X9087	1	1	Rear cover	"Rear cover removal" on page 318
6	40X9090	1	1	Right cover	"Right cover removal" on page 252
7	40X9100	1	1	Memory access door (MFP)	"Memory access door removal" on page 255
8	40X8086	1	1	550-sheet tray	N/A
9	40X9148	1	1	Cartridge plunger	"Cartridge plunger removal" on page 268
10	40X9101	1	1	Name plate cover	"Name plate cover removal" on page 270
11	40X9095	1	1	Front bin cover	"Front bin cover removal" on page 272
12	40X9131	1	1	MPF tray cover	"MPF tray removal" on page 286
13	40X9068	1	1	Front access cover (MPF)	"Front access cover removal" on page 291
14	40X9086	1	1	Left cover	"Left cover removal" on page 239
15	40X9126	1	1	Bin full sensor cable	"Bin full sensor cable removal" on page 327
16	40X9092	1	2	Bin full sensor	"Bin full sensor/lens removal" on page 325
17	40X9127	1	1	IR sensor lens	"Bin full sensor/lens removal" on page 325

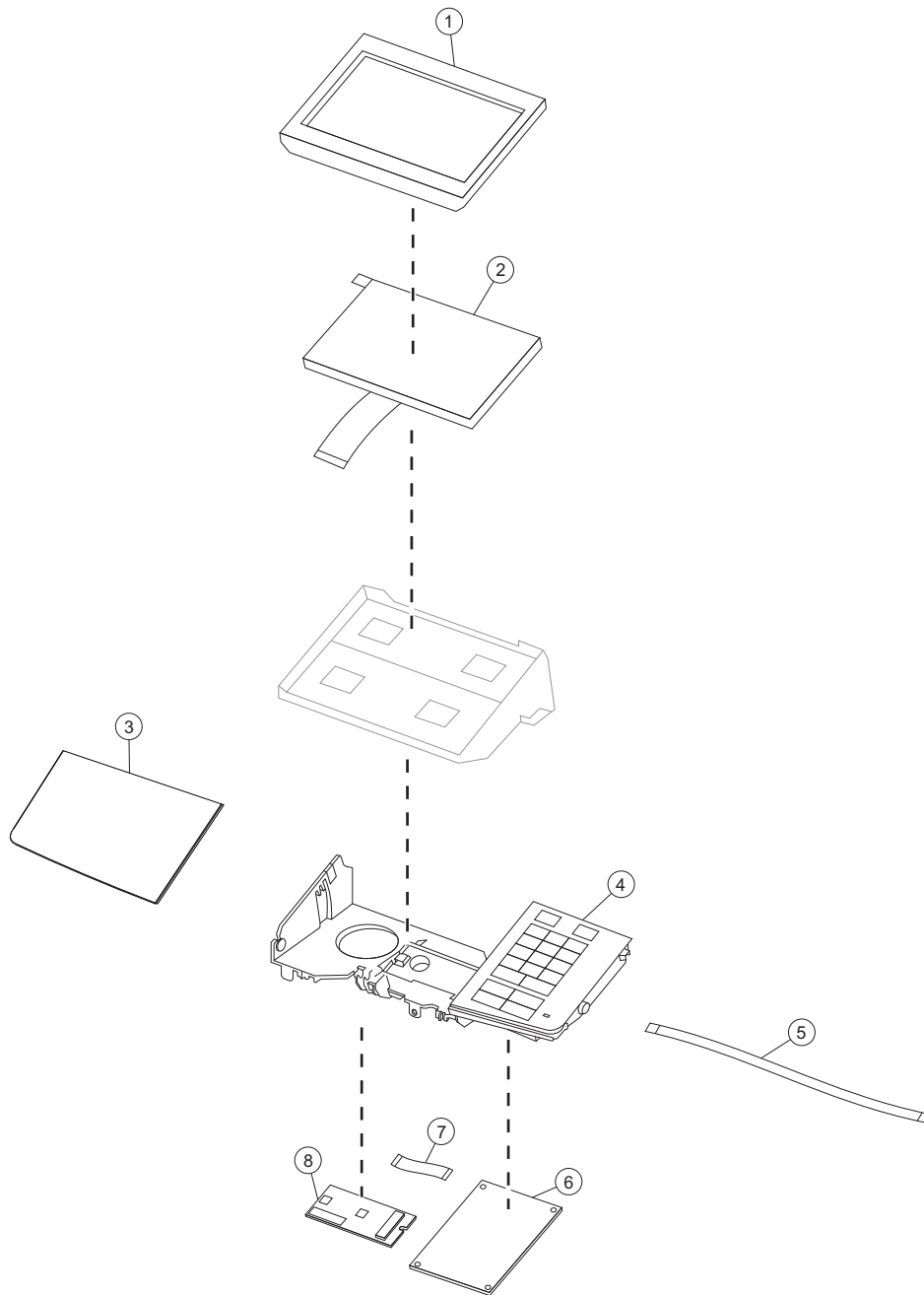
Assembly 2: Imaging



Assembly 2: Imaging

Asm-index	P/N	Units/mach	Units/FRU	Description	Removal procedure
1	40X9108	1	1	ADF separator roller	“ADF separator roll removal ” on page 330
2	40X9054	1	1	ADF input tray	“ADF input tray removal” on page 333
3	40X9093	1	1	ADF assembly	“ADF unit removal” on page 333
4	40X9110	1	1	Restraint pad	“Restraint pad removal” on page 345
5	40X5804	1	1	Flatbed cushion (legal)	“Flatbed cushion removal ” on page 331
6	40X7546	1	1	ADF right hinge	“ADF hinge removal” on page 342
7	40X9094	1	1	Flatbed	“Flatbed assembly removal” on page 343
8	40X9051	1	1	MPF USB cable	“USB cable removal” on page 340
9	40X9053	1	1	USB cable bracket	“USB cable bracket removal” on page 279
10	40X9097	1	1	Scanner front cover	“Scanner front cover removal” on page 332
11	40X9088	1	1	Cave light lens	“Cave light lens removal” on page 280
12	40X9080	1	1	Speaker cable	“Speaker cable removal” on page 343
13	40X9129	1	1	ADF left hinge	“ADF hinge removal” on page 342
14	40X9050	1	1	MPF wireless cable	“USB wireless cable removal” on page 341
15	40X9079	1	1	Speaker	“Speaker removal” on page 279
16	40X8736	1	1	ADF pick roll	N/A
17	40X9142	1	1	ADF top cover (legal)	“ADF top cover assembly removal” on page 338
18	40X9117	1	1	High end ADF cable	“ADF cable removal” on page 339

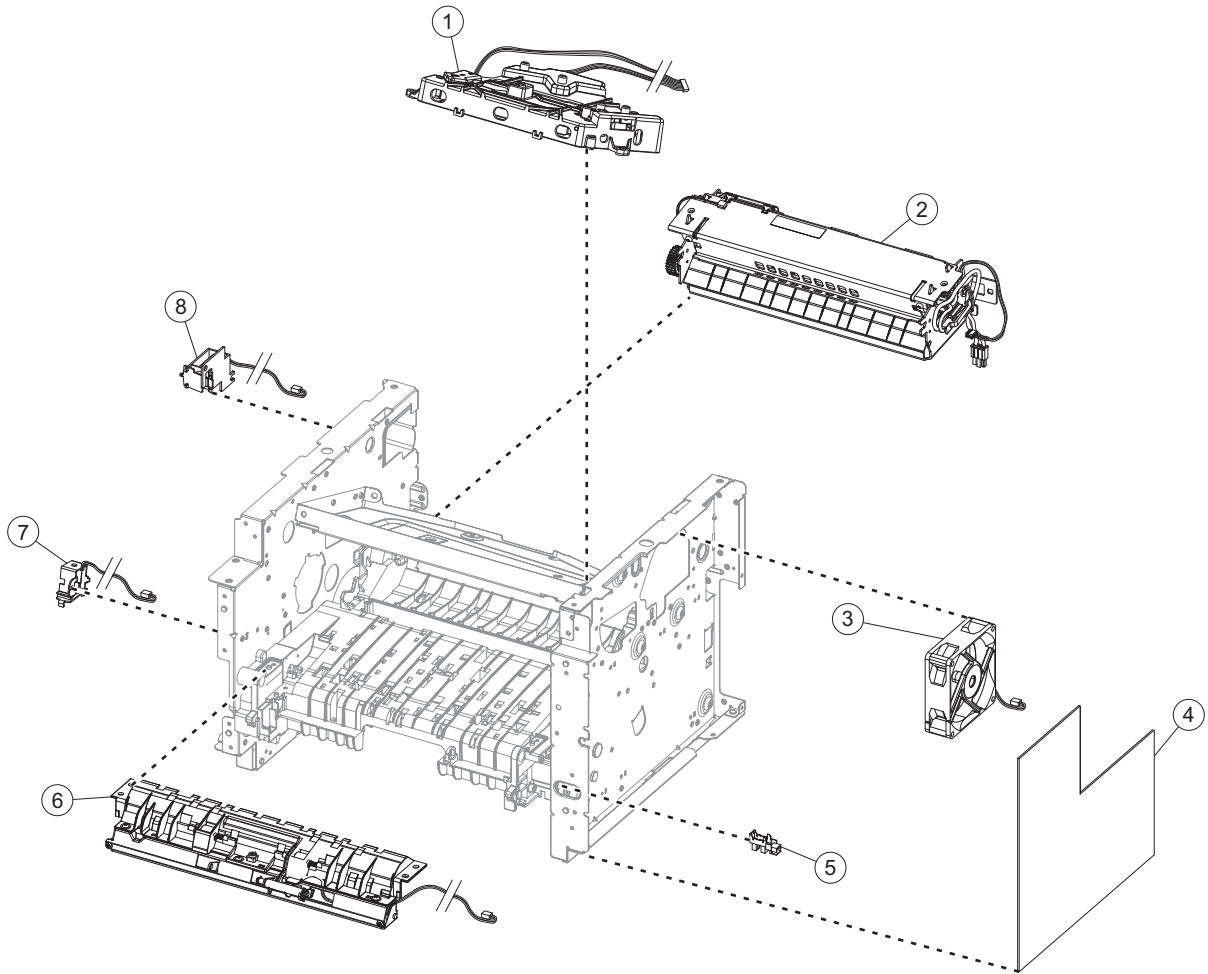
Assembly 3: Control panel



Assembly 3: Control panel

Asm-index	P/N	Units/mach	Units/FRU	Description	Removal procedure
1	40X9089	1	1	LCD top cover	N/A
2	40X7861	1	1	7" LCD (touch-screen)	"Display removal" on page 283
3	40X9125	1	1	Control panel cover (MX610de)	"Control panel cover removal" on page 282
3	40X9132	1	1	Control panel cover (MX611de and XM3150)	"Control panel cover removal" on page 282
3	40X9133	1	1	Control panel cover (MX611dhe)	"Control panel cover removal" on page 282
4	40X9120	1	1	Keypad assembly cover	"Keypad assembly removal" on page 285
5	40X9052	1	1	UICC cable	N/A
6	40X9130	1	1	UICC	"UICC removal" on page 277
7	40X9085	1	1	UICC video cable	N/A
8	40X9115	1	1	Interface card	"Interface card removal" on page 281

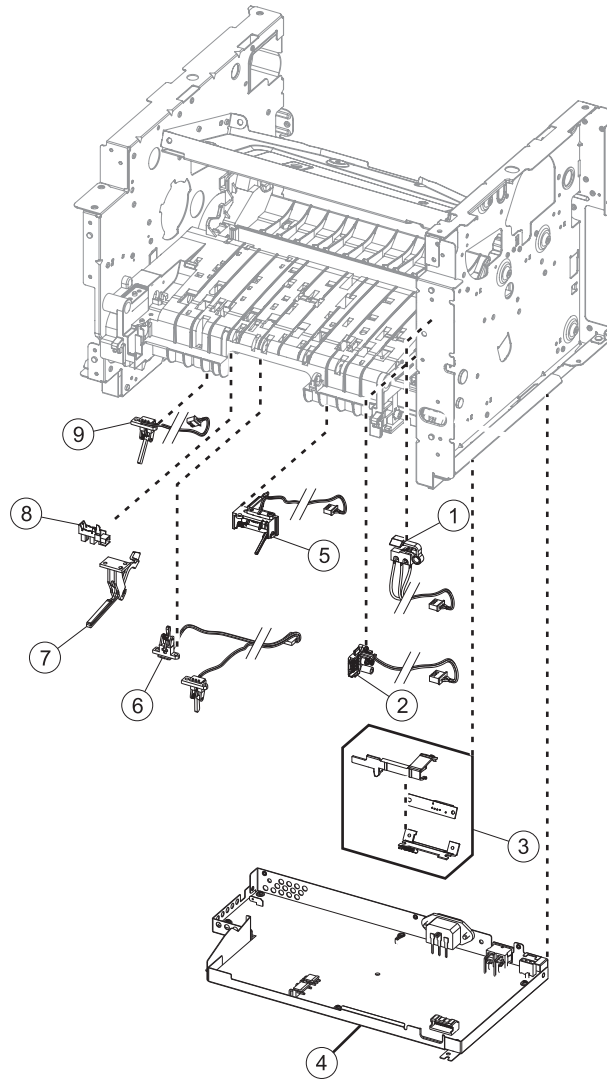
Assembly 4: Electronics 1



Assembly 4: Electronics 1

Asm-index	P/N	Units/mach	Units/FRU	Description	Removal procedure
1	40X8079	1	1	Laser scanning unit	"Laser scanning unit (LSU) removal" on page 328
2	40X8343	1	1	Fuser, 100 V	"Fuser removal" on page 320
2	40X8023	1	1	Fuser, 110 V	"Fuser removal" on page 320
2	40X8024	1	1	Fuser, 220 V	"Fuser removal" on page 320
3	40X8274	1	1	Cooling fan	"Cooling fan removal" on page 256
4	40X9254	1	1	Controller board	"Controller board removal" on page 257
5	40X7592	1	1	Tray present sensor	"Tray present sensor removal" on page 255
6	40X8280	1	1	Front input guide	"Front input guide removal" on page 293
7	40X8300	1	1	MPF solenoid	"MPF solenoid removal" on page 243
8	40X8301	1	1	Reverse solenoid	"Reverse solenoid removal" on page 248
NS	40X7854	1	1	Fax card	N/A

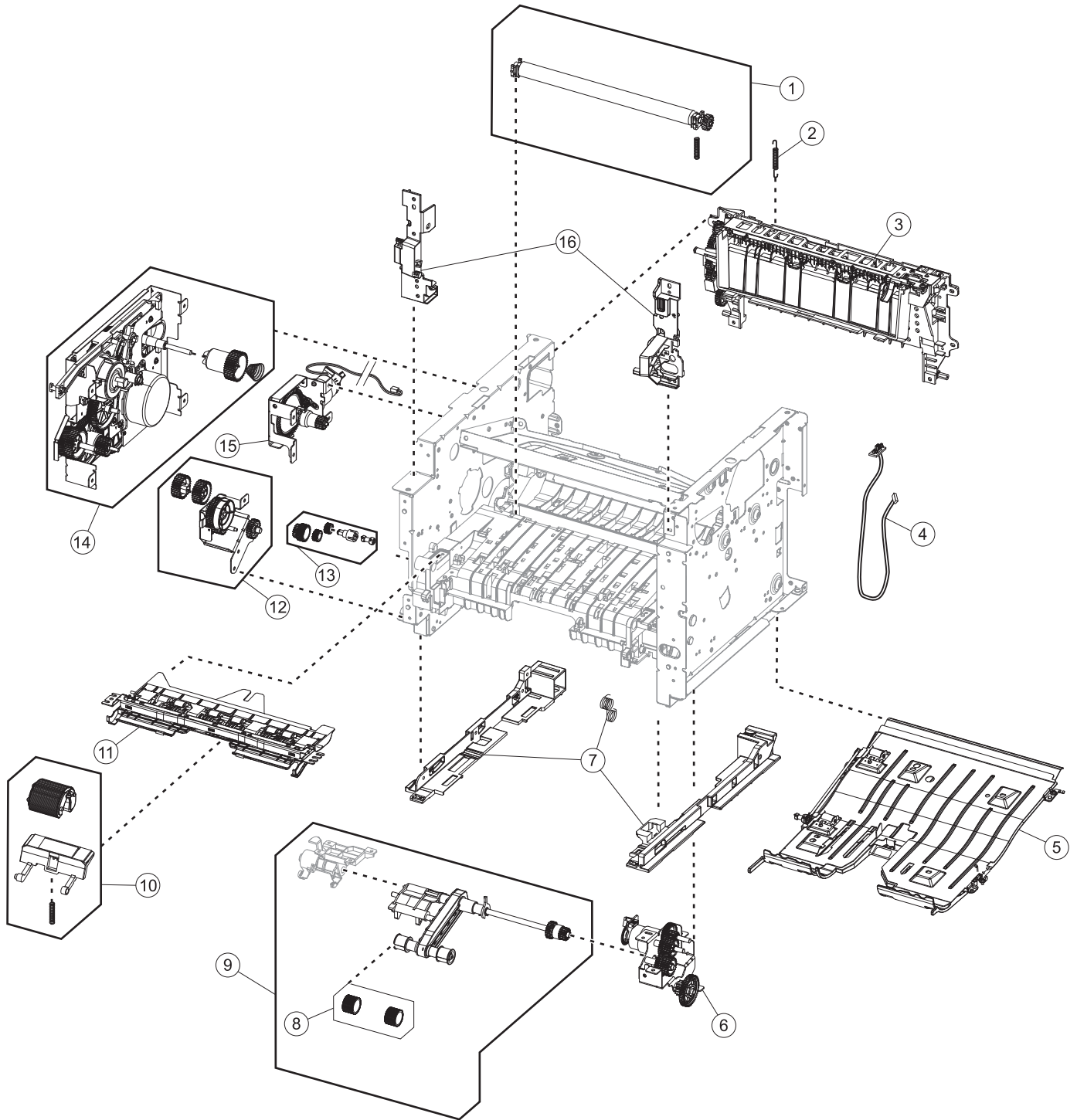
Assembly 5: Electronics 2



Assembly 5: Electronics 2

Asm-index	P/N	Units/mach	Units/FRU	Description	Removal procedure
1	40X8048	1	1	Front door sensor	"Front door sensor removal" on page 293
2	40X8266	1	1	Cartridge smart chip contact	"Toner cartridge smart chip contact removal" on page 261
3	40X8046	1	1	Toner density sensor	"Toner density sensor removal" on page 305
4	40X7797	1	1	Power supply, 100 V/110 V	"Power supply removal" on page 298
4	40X7798	1	1	Power supply, 220 V	"Power supply removal" on page 298
5	40X8045	1	1	Trailing edge sensor	"Trailing edge sensor removal" on page 306
6	40X8043	1	1	Duplex sensor and input sensor	"Duplex sensor and input sensor removal" on page 300
7	40X8800	1	1	Media present sensor flag	"Media present sensor flag removal" on page 307
8	40X7592	1	1	Media present sensor	"Media present sensor removal" on page 303
9	40X8044	1	1	Index sensor	"Index sensor removal" on page 303

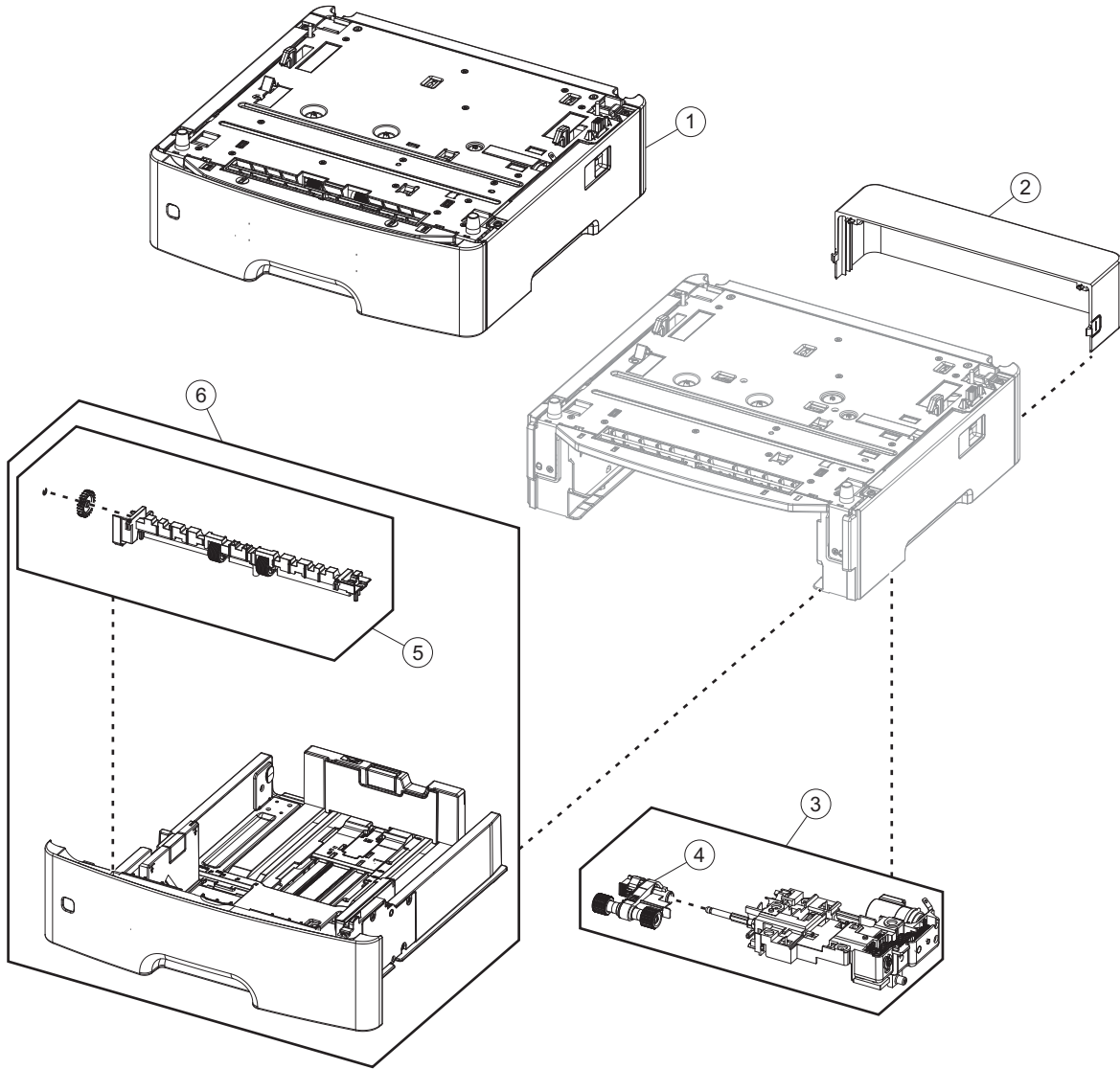
Assembly 6: Frame



Assembly 6: Frame

Asm-index	P/N	Units/mach	Units/FRU	Description	Removal procedure
1	40X8393	1	1	Transfer roll	"Transfer roll removal" on page 267
2	40X9098	1	1	Stapler diverter spring	"Diverter spring removal" on page 323
3	40X9082	1	1	Redrive assembly	"Redrive assembly removal" on page 318
4	40X9116	1	1	Stapler cable	"Stapler cable removal" on page 321
5	40X8275	1	1	Duplex assembly	"Duplex removal" on page 299
6	40X8084	1	1	ACM liftplate gearbox	"Pick/lift motor gearbox removal" on page 313
7	40X9523	1	1	Tray guide	"Tray guide removal" on page 314
8	40X8297	2	2	Pick tire	N/A
9	40X8261	1	1	ACM assembly	"ACM assembly removal" on page 311
10	40X8295	2	2	MPF pick roller and separator pad	"MPF pick roller removal" on page 288 and "Separator pad removal" on page 295
11	40X8279	1	1	Jam access cover	"Jam access cover removal" on page 290
12	40X8278	1	1	MPF gearbox	"MPF gearbox removal" on page 245
13	40X8277	1	1	Duplex gear assembly	"Duplex gear assembly removal" on page 250
14	40X8085	1	1	Main drive gearbox	"Main drive gearbox removal" on page 241
15	40X8083	1	1	Cartridge gearbox	"Cartridge gearbox removal" on page 249
16	40X8299	1	1	Front mounts	"Left front mount removal" on page 264 "Right front mount removal" on page 265

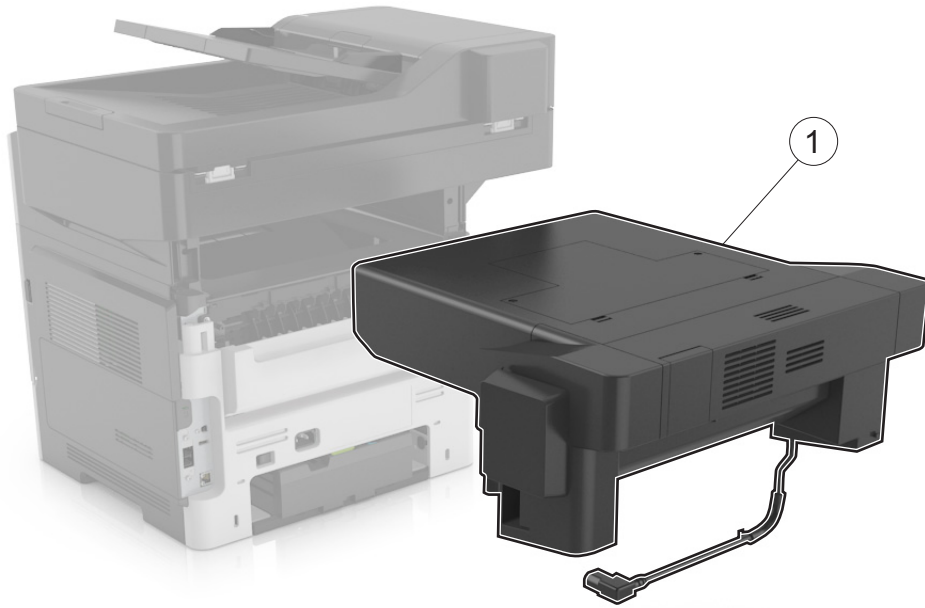
Assembly 7: Option trays



Assembly 7: Option trays

Asm-index	P/N	Units/mach	Units/FRU	Description	Removal procedure
1	40X8287	1	1	250-sheet tray	N/A
1	40X8286	1	1	550-sheet tray	N/A
1	40X9654	1	1	550-sheet tray, lockable	N/A
2	40X8520	1	1	Dust cover, 250-sheet tray	"Dust cover removal" on page 316
2	40X8521	1	1	Dust cover, 550-sheet tray	"Dust cover removal" on page 316
3	40X8262	1	1	ACM assembly	"ACM assembly removal" on page 349
4	40X8443	1	1	Pick roller assembly	"Pick roller removal" on page 346
5	40X8444	1	1	Separator roll assembly	"Separator roll assembly removal" on page 347
6	40X8305	1	1	250-sheet tray insert	N/A
6	40X8086	1	1	550-sheet tray insert	N/A

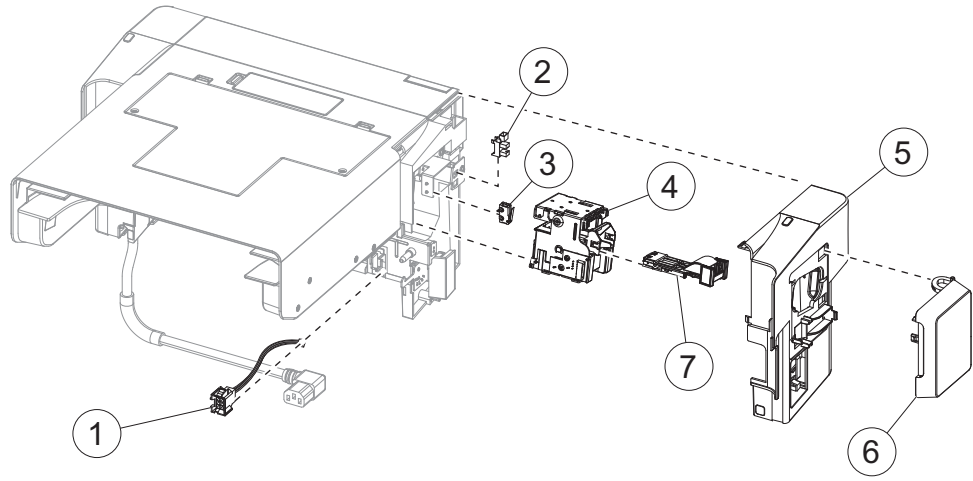
Assembly 8: Staple finisher option



Assembly 8: Staple finisher option

Asm-index	P/N	Units/mach	Units/FRU	Description	Removal procedure
1	40X8121	1	1	Staple finisher option	“Staple finisher option removal” on page 352

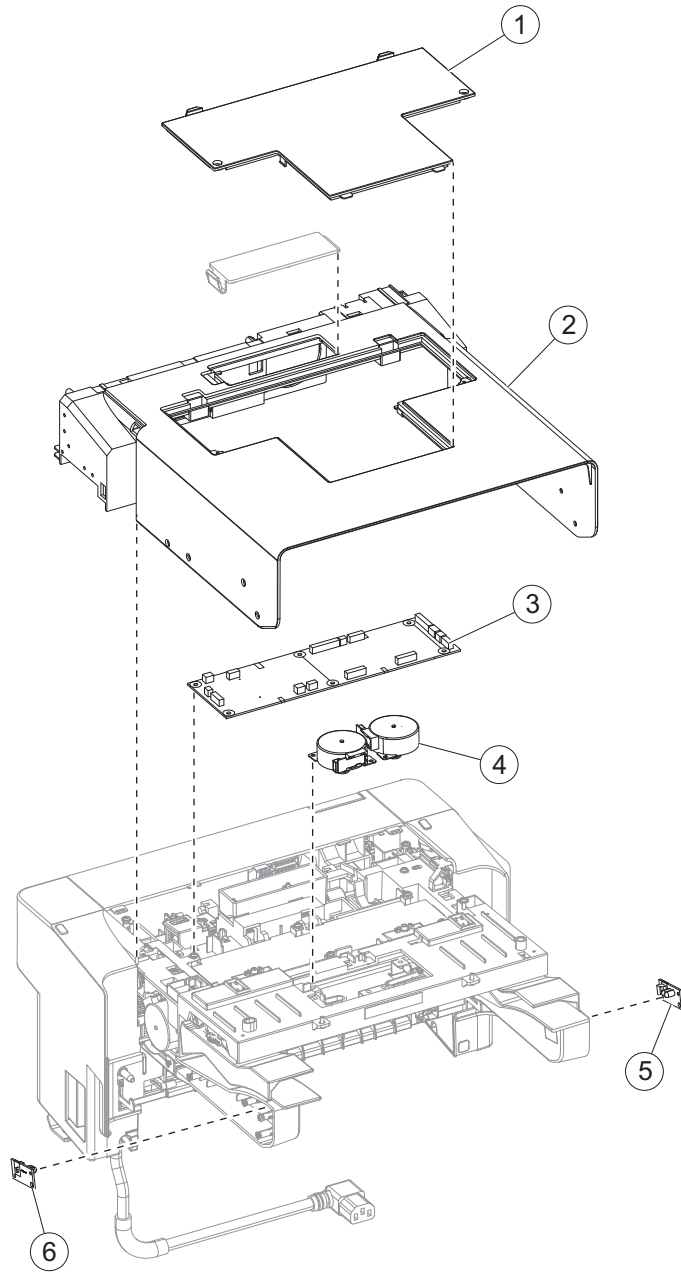
Assembly 9: Staple finisher (right)



Assembly 9: Staple finisher (right)

Asm-index	P/N	Units/mach	Units/FRU	Description	Removal procedure
1	40X8144	1	1	Stapler interface cable	"Stapler interface cable removal" on page 374
2	40X7592	1	1	Sensor (stapler access door)	"Sensor (stapler access door) removal" on page 358
3	40X8139	1	1	Stapler door close limit switch with cable	"Stapler door close limit switch removal" on page 360
4	40X8142	1	1	Stapler carriage assembly	"Stapler carriage assembly removal" on page 358
5	40X8130	1	1	Stapler right cover	"Stapler right cover removal" on page 355
6	40X8129	1	1	Stapler cartridge access door	"Stapler cartridge access door removal" on page 353
7	40X8149	1	1	Staple roll holder	"Staple roll holder removal" on page 354

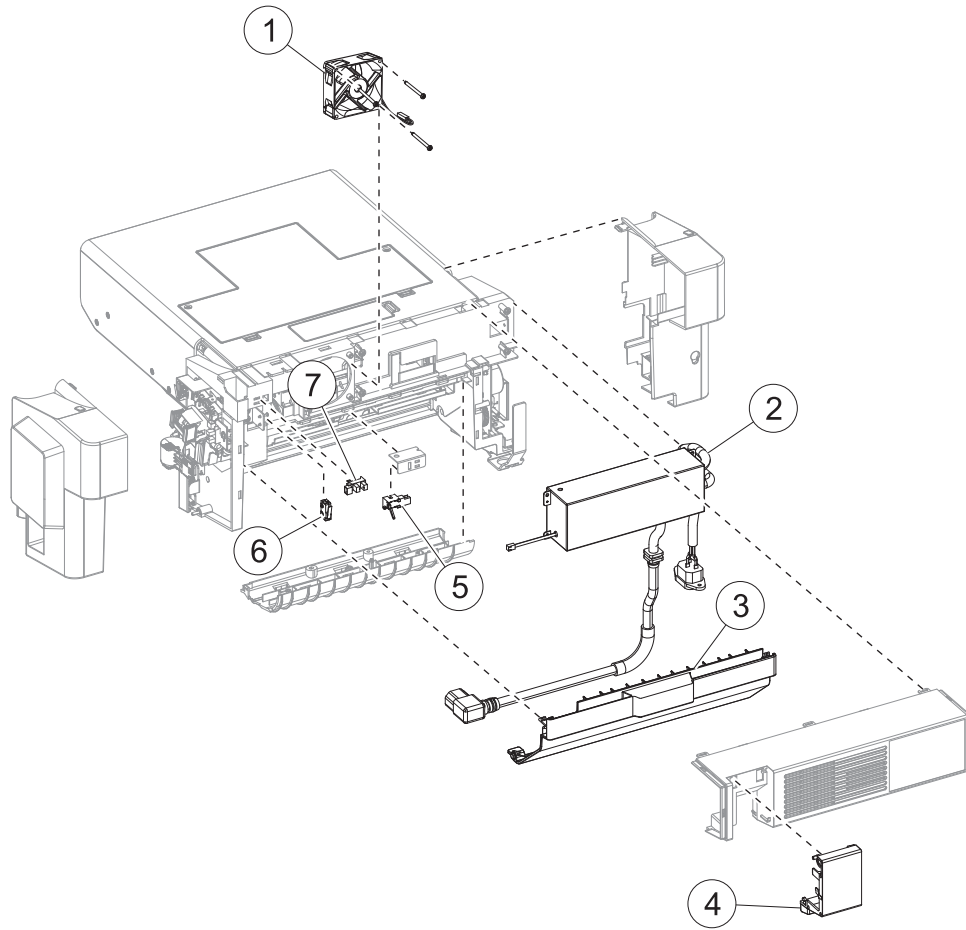
Assembly 10: Staple finisher (top)



Assembly 10: Staple finisher (top)

Asm-index	P/N	Units/mach	Units/FRU	Description	Removal procedure
1	40X8140	1	1	Stapler service cover	"Stapler service cover removal" on page 368
2	40X8141	1	1	Stapler top cover	"Stapler top cover removal" on page 376
3	40X8137	1	1	Stapler controller card	"Stapler controller card removal" on page 368
4	40X8125	1	1	Stapler tamper motor	"Stapler left tamper motor removal" on page 368 or "Stapler right tamper motor removal" on page 369
5	40X8131	1	1	Sensor (stapler bin full send)	"Sensor (stapler bin full send) removal" on page 381
6	40X8132	1	1	Sensor (stapler bin full receive)	"Sensor (stapler bin full receive) removal" on page 379

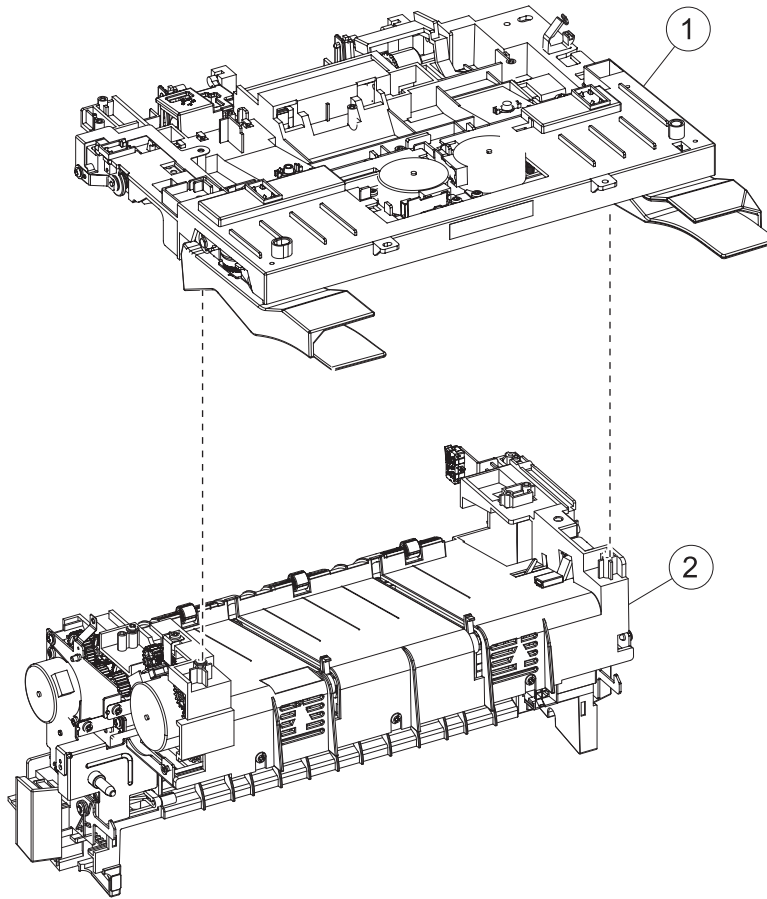
Assembly 11: Staple finisher (rear)



Assembly 11: Staple finisher (rear)

Asm-index	P/N	Units/mach	Units/FRU	Description	Removal procedure
1	40X8148	1	1	Stapler cooling fan	“Stapler cooling fan removal” on page 372
2	40X8135	1	1	Stapler power supply unit	“Stapler power supply unit removal” on page 372
2	40X8540	1	1	Stapler power supply unit—China	“Stapler power supply unit removal” on page 372
3	40X8128	1	1	Stapler rear door	“Stapler rear door removal” on page 357
4	40X8458	1	1	Trapped staple access door	“Trapped staple access door removal” on page 367
5	40X8134	1	1	Sensor (stapler pass through)	“Sensor (stapler pass through) removal” on page 384
6	40X8138	1	1	Stapler rear door close limit switch with cable	“Stapler rear cover close limit switch removal” on page 370
7	40X7592	1	1	Sensor (stapler rear door)	“Sensor (stapler rear cover) removal” on page 365

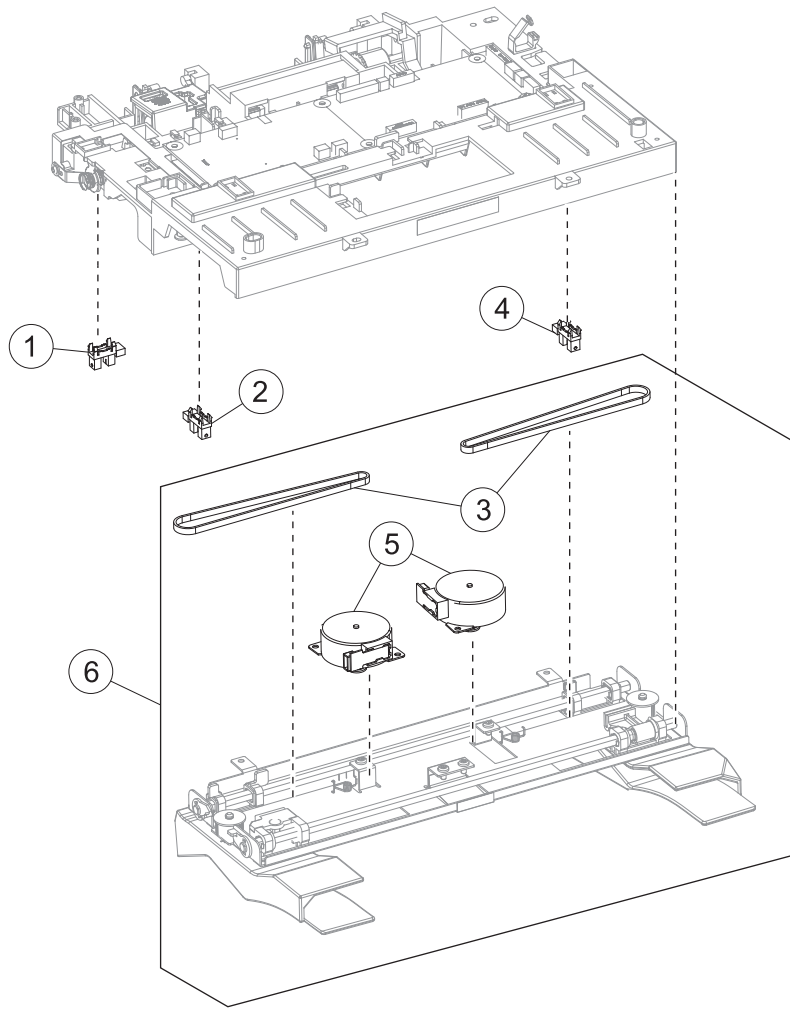
Assembly 12: Staple finisher exit assembly



Assembly 12: Staple finisher exit assembly

Asm-index	P/N	Units/mach	Units/FRU	Description	Removal procedure
1	40X8748	1	1	Stapler tamper main assembly	“Tamper main assembly removal” on page 386
2	40X8751	1	1	Stapler accumulator assembly	“Stapler accumulator assembly removal” on page 393

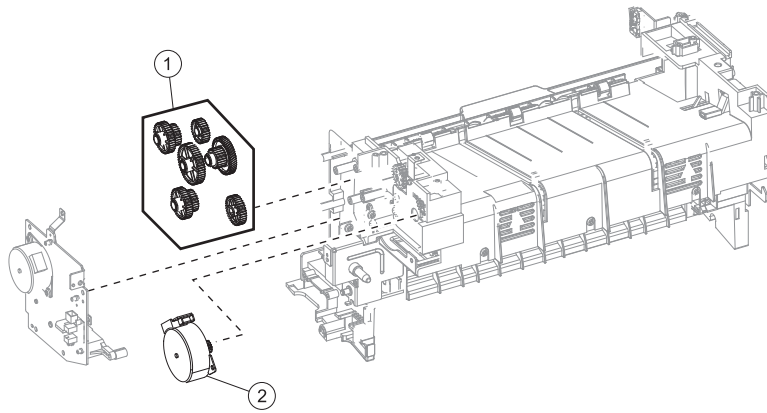
Assembly 13: Staple finisher tamper assembly



Assembly 13: Staple finisher tamper assembly

Asm-index	P/N	Units/mach	Units/FRU	Description	Removal procedure
1	40X8754	1	1	Sensor (stapler paddle HP)	"Sensor (stapler paddle HP) removal" on page 395
2	40X8754	1	1	Sensor (stapler left tamper HP)	"Sensor (stapler left tamper HP) removal" on page 394
3	40X8750	2	2	Stapler tamper drive belt	"Tamper drive belt removal" on page 389
4	40X8754	1	1	Sensor (stapler right tamper HP)	"Sensor (stapler right tamper HP) removal" on page 393
5	40X8125	2	1	Stapler tamper motor	"Stapler left tamper motor removal" on page 368 or "Stapler right tamper motor removal" on page 369
6	40X8749	1	1	Tamper sub-assembly	"Tamper sub-assembly removal" on page 387

Assembly 14: Staple finisher accumulator assembly



Assembly 14: Staple finisher accumulator assembly

Asm-index	P/N	Units/mach	Units/FRU	Description	Removal procedure
1	40X8752	1	1	Stapler diverter gearbox	"Diverter gearbox removal" on page 390
2	40X8753	1	1	Stapler paddle motor	"Stapler paddle motor removal" on page 364

Assembly 15: Maintenance kits

Asm-index	P/N	Units/mach	Units/FRU	Description	Removal procedure
NS	40X9147	1	1	Maintenance kit, 100 V	N/A
NS	40X9137	1	1	Maintenance kit, 110 V	N/A
NS	40X9138	1	1	Maintenance kit, 220 V	N/A

Assembly 16: Power cords

Asm-index	P/N	Units/mach	Units/FRU	Description	Removal procedure
NS	40X0269	1	1	Power cord, 2.5 m (straight)—USA, Canada	N/A
NS	40X3141	1	1	Power cord, 2.5 m (straight)—Europe and others	N/A
NS	40X0288	1	1	Power cord, 2.5 m (straight)—Argentina	N/A
NS	40X0271	1	1	Power cord, 2.5 m (straight)—United Kingdom	N/A
NS	40X0275	1	1	Power cord, 2.5 m (straight)—Israel	N/A
NS	40X1772	1	1	Power cord, 2.5 m (straight)—Switzerland	N/A
NS	40X1773	1	1	Power cord, 2.5 m (straight)—South Africa	N/A
NS	40X0273	1	1	Power cord, 2.5 m (straight)—Traditional Italy	N/A
NS	40X1774	1	1	Power cord, 2.5 m (straight)—Denmark	N/A
NS	40X4596	1	1	Power cord, 2.5 m (straight)—Brazil	N/A
NS	40X0303	1	1	Power cord, 2.5 m (straight)—China	N/A
NS	40X0270	1	1	Power cord, 2.5 m (straight)—Japan	N/A
NS	40X1792	1	1	Power cord, 2.5 m (straight)—Korea	N/A
NS	40X1791	1	1	Power cord, 2.5 m (straight)—Taiwan	N/A
NS	40X0301	1	1	Power cord, 2.5 m (straight)—Australia	N/A

Assembly 17: Miscellaneous

Asm-index	P/N	Units/mach	Units/FRU	Description	Removal procedure
NS	40X7856	1	1	Hard disk drive (ATA pass through)	N/A
NS	40X7858	1	1	Adapter, 802.11B/G/N - US	N/A
NS	40X4819	1	1	Adapter, RS232C serial	N/A
NS	40X5315	1	1	Screw, shipped with ISP (2PER)	N/A
NS	40X5316	1	1	Cable, 14-pin JST- for ISP	N/A
NS	40X5317	1	1	Standoff, tee with thumbscrew	N/A
NS	40X4826	1	1	Adapter, N8120 GB INA	N/A
NS	40X4823	1	1	Adapter, parallel 1284-B THCK	N/A
NS	40X4827	1	1	Adapter, N8130 10/100 fiber	N/A
NS	40X8525	1	1	Adapter, fiber ISP	N/A
NS	40X8556	1	1	Font card, Traditional Chinese	N/A
NS	40X8557	1	1	Font card, Simplified Chinese	N/A
NS	40X8568	1	1	Font card, Korean	N/A
NS	40X8569	1	1	Font card, Japanese	N/A
NS	40X1368	1	1	USB cable, packaged (2 meters)	N/A
NS	40X8656	1	1	Forms and Bar code card	N/A
NS	40X8657	1	1	IPDS card	N/A
NS	40X8658	1	1	Prescribe card	N/A
NS	40X7445	1	1	2GB DDR3 DIMM	N/A
NS	40X7567	1	1	1GB DDR3 DIMM	N/A
NS	40X8570	1	1	Font card, Arabic	N/A
NS	40X8571	1	1	Font card, Hebrew	N/A
NS	40X8524	1	1	Parallel 1284-B interface card (MX51x)	N/A
NS	40X8523	1	1	RS-232C Serial Interface Card (MX51x)	N/A
NS	40X8526	1	1	MarkNet N8350 802.11 b/g/n Wireless Print Server (MX51x)	N/A
NS	40X8700	1	1	Relocation kit	N/A

